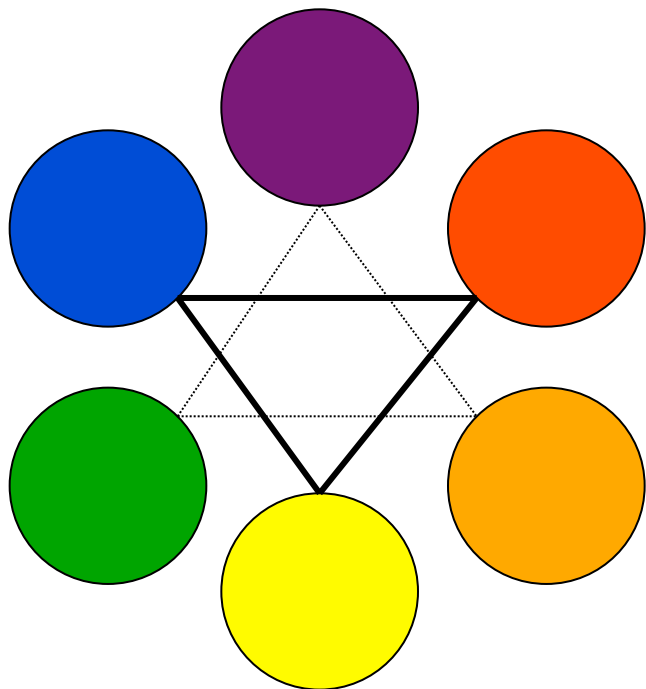


# colour wheel



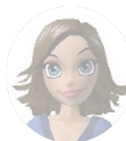
The primary colours are red, blue and yellow.

The secondary colours are orange, purple and green - which could be mixed by blending the primary colours with specific formulas.

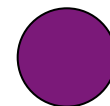
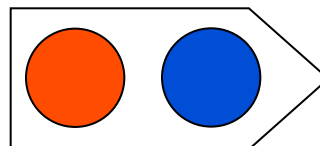
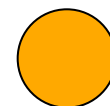
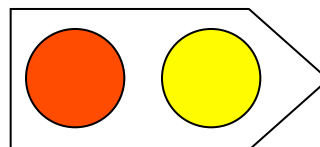
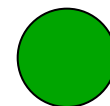
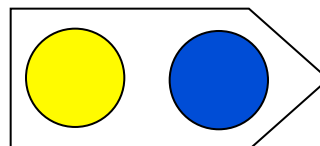
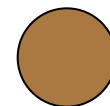
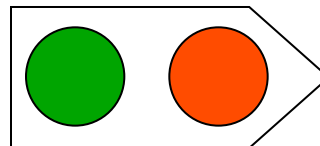
Yellow and blue make green.

Red and blue make purple.

Yellow and red make orange.



# mix these colours



Adding white to a colour will lighten it and adding black will tint it into a darker shade.

